



**CHAIRMAN CRAIG CURRY**



**TAKING MARION TO NEW HEIGHTS**



**VETERANS**



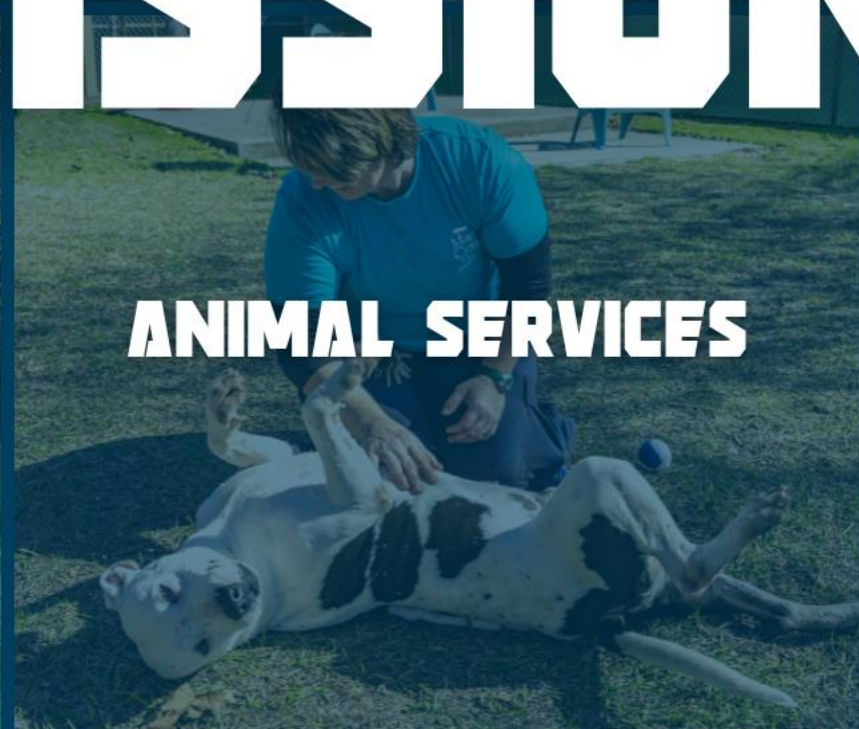
**FIRE RESCUE**



**TRANSPORTATION**



**TOURISM**



**ANIMAL SERVICES**



**LITTER-FREE**

# MISSIONS



# VETERANS MEMORIAL PARK







**FRIENDS OF MARION COUNTY VETERANS**

**PARK FOUNDATION**

**INFO@MARIONVETPARK.COM**

---



# VETERANS NURSING HOME





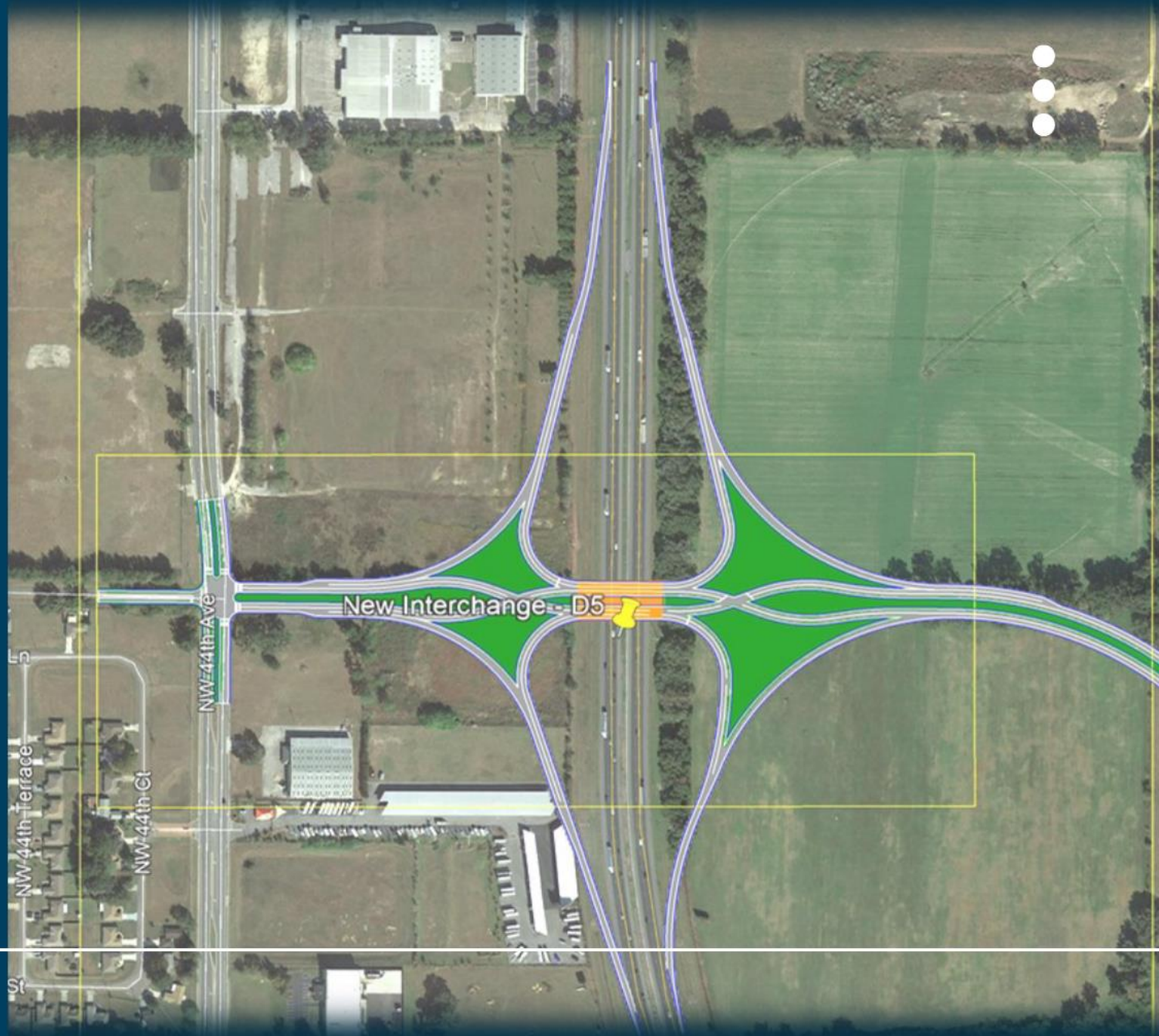
# TRANSPORTATION INFRASTRUCTURE







# 49TH STREET INTERCHANGE





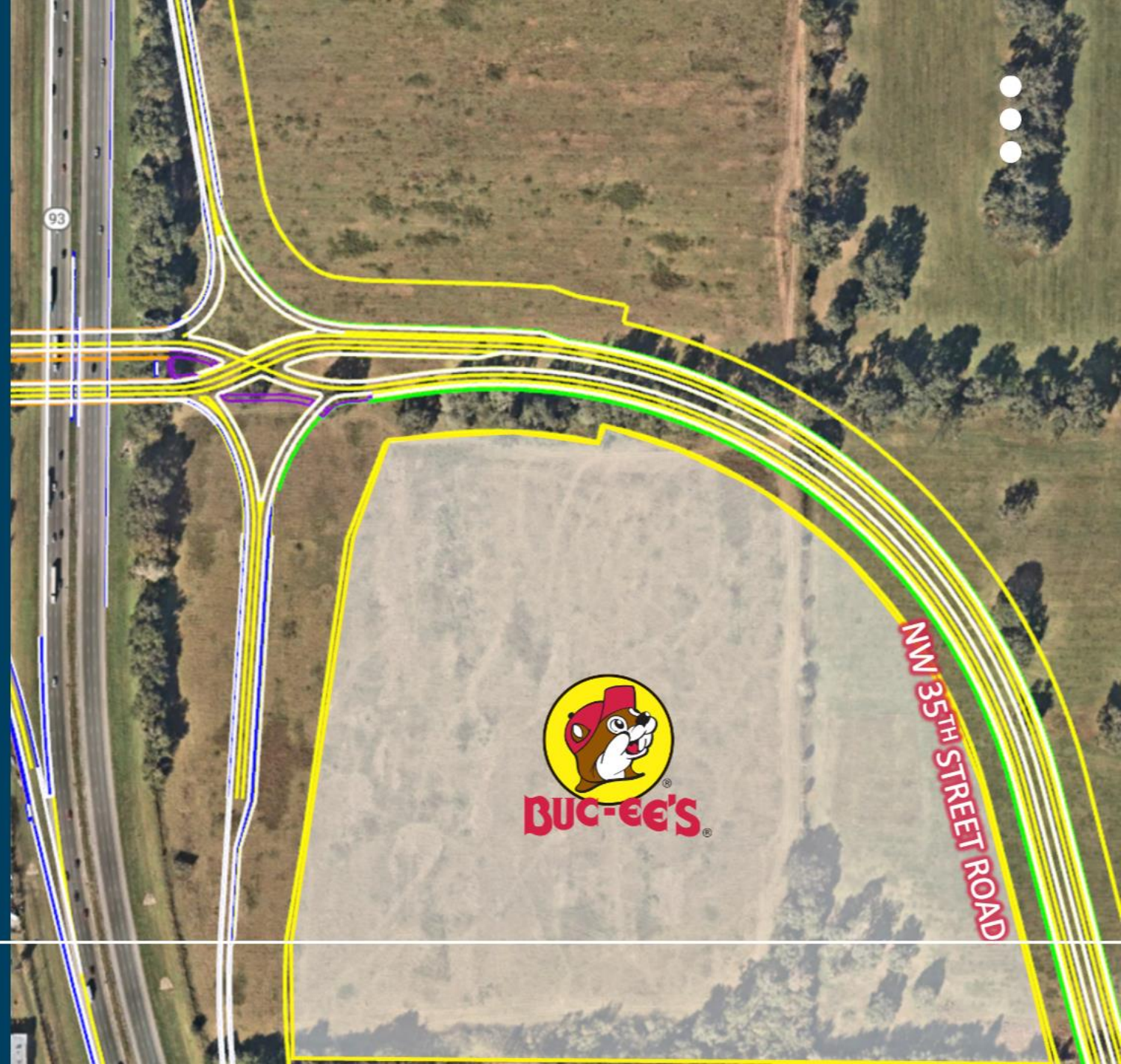


**BUC-EE'S**





**NEW BUC-EE'S**





---

# FLORIDA'S TURNPIKE





**ASSISTANT COUNTY ADMINISTRATOR, TRACY STRAUB**



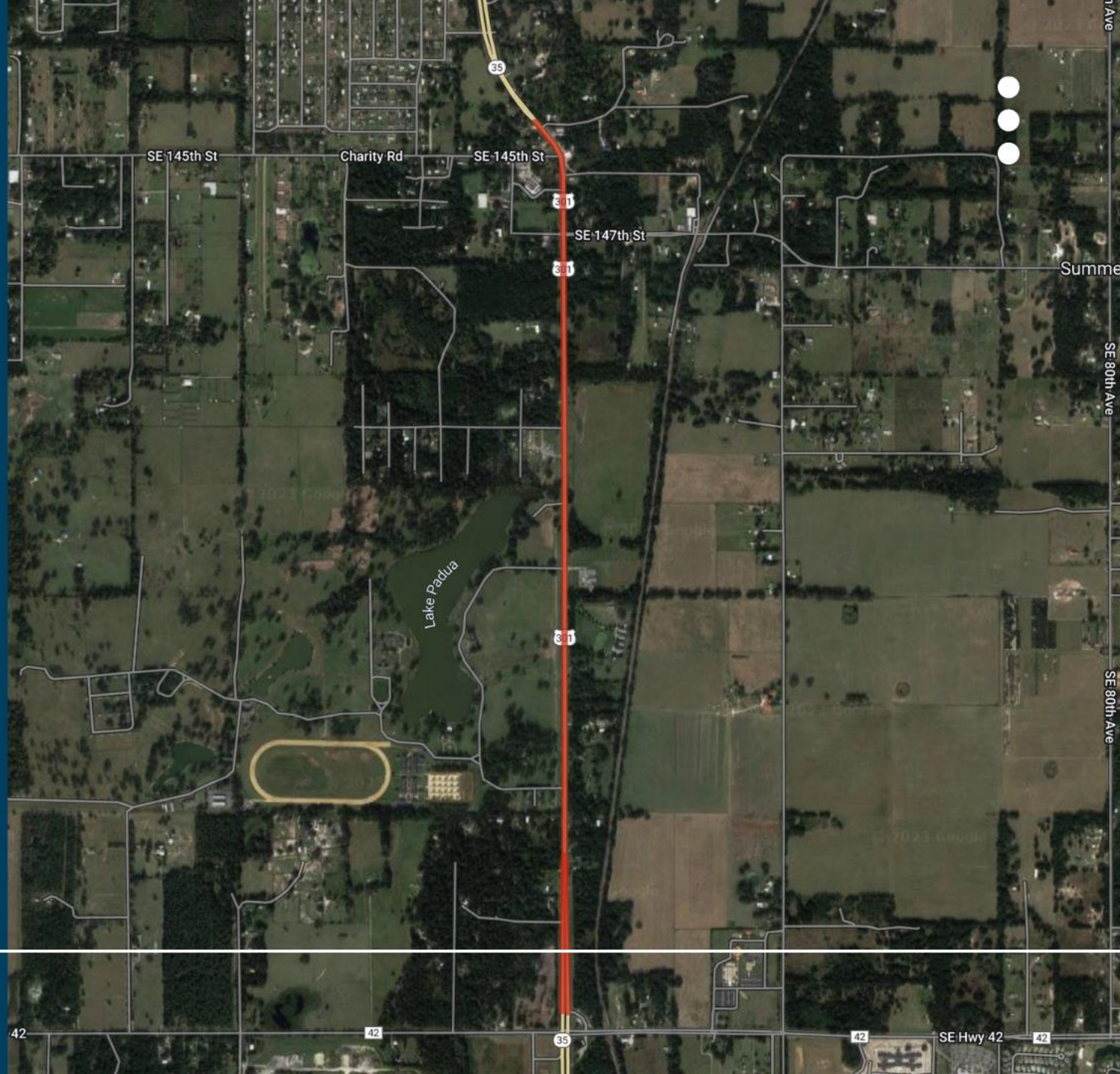
# TRANSPORTATION INFRASTRUCTURE



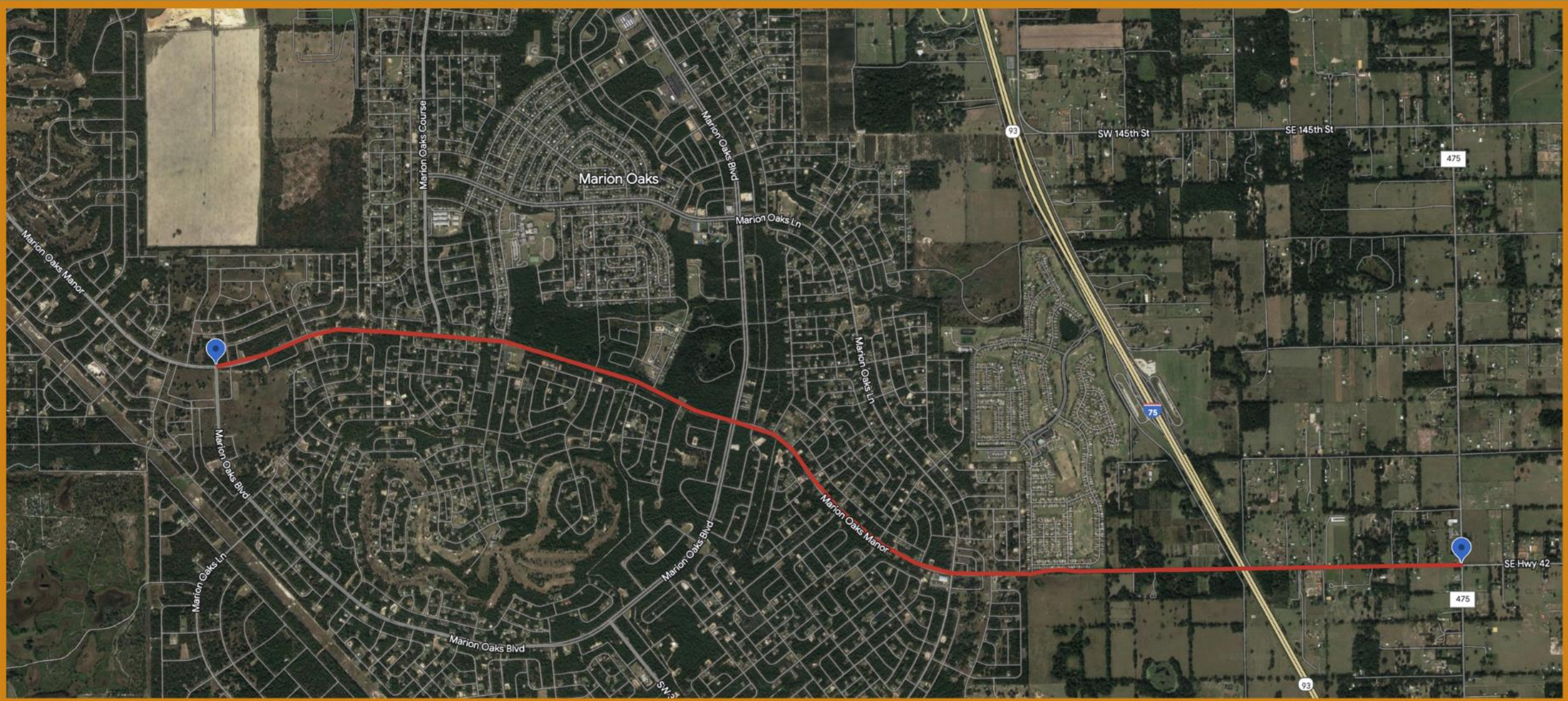


---

# HWY 301 WIDENING







**FLYOVER EXTENDING MARION CR 42 NEAR CR 475**



---

# AIRPLANE SERVICES





**TAKING MARION TO NEW HEIGHTS**